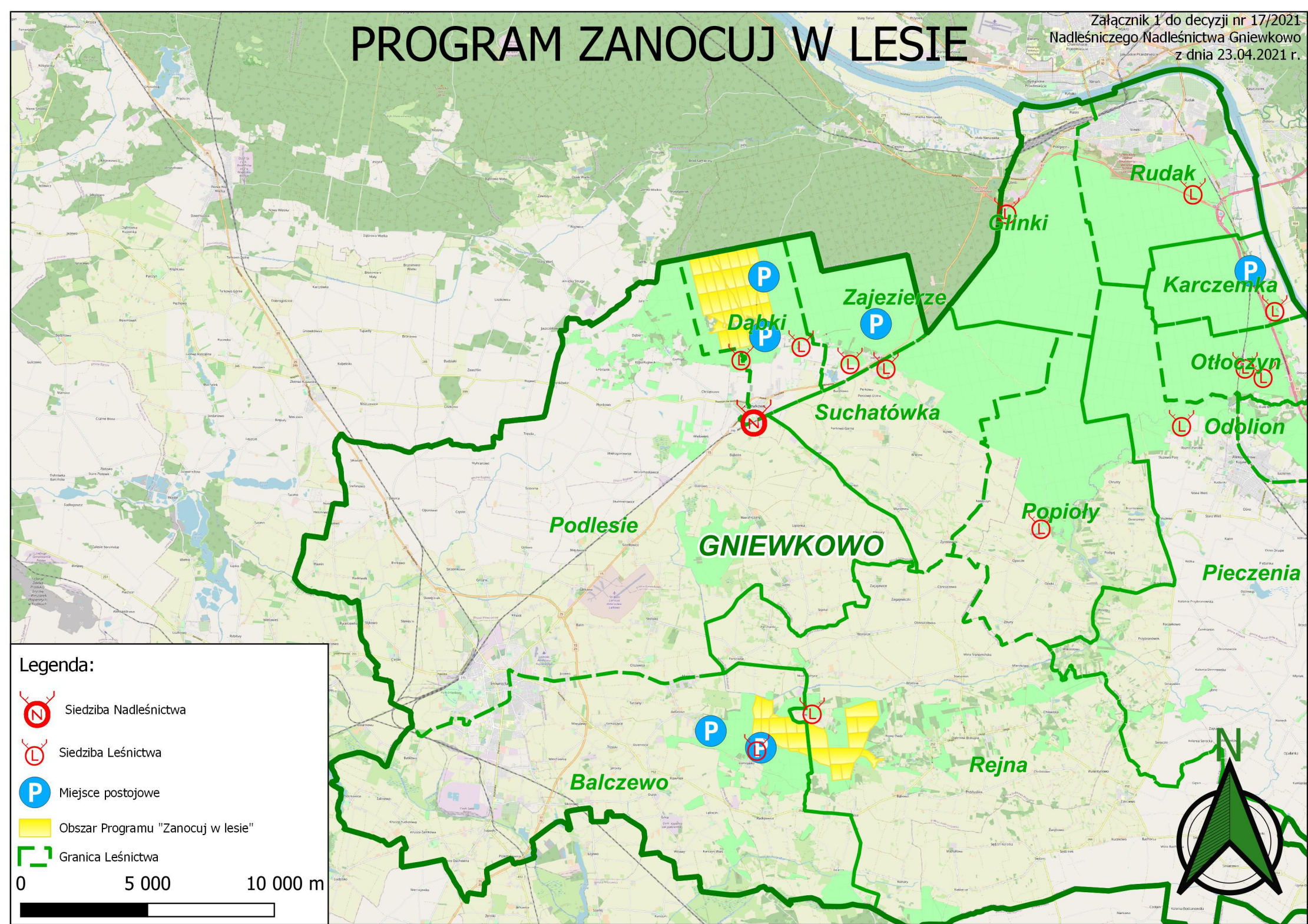







PROGRAM ZANOCUJ W LESIE

Załącznik 1 do decyzji nr 17/2021
Nadleśniczego Nadleśnictwa Gniewkowo
z dnia 23.04.2021 r.



Legenda:

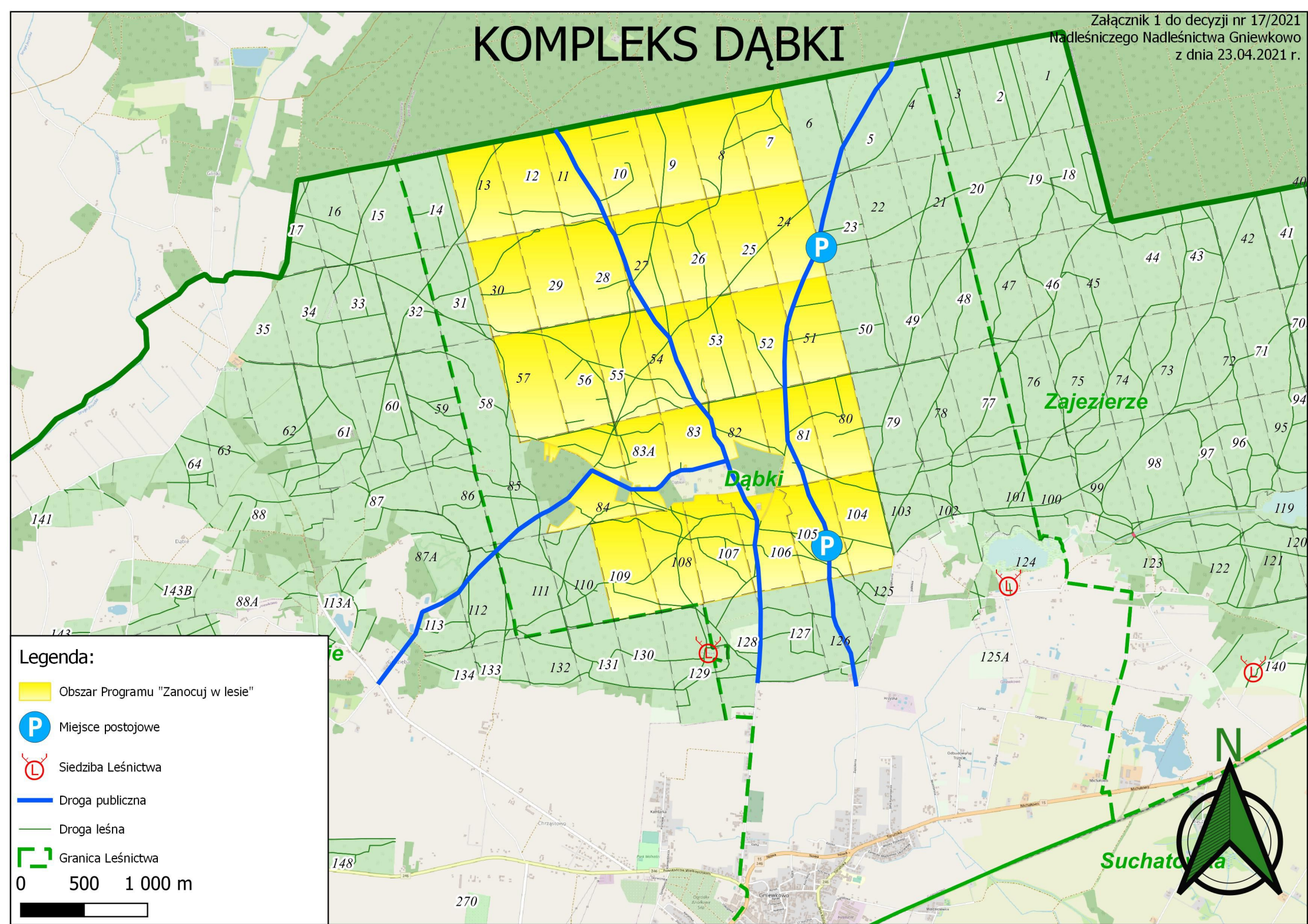
-  Siedziba Nadleśnictwa
-  Siedziba Leśnictwa
-  Miejsce postojowe
-  Obszar Programu "Zanocuj w lesie"
-  Granica Leśnictwa

0 5 000 10 000 m









KOMPLEKS DĄBKI

Załącznik 1 do decyzji nr 17/2021
Nadleśniczego Nadleśnictwa Gniewkowo
z dnia 23.04.2021 r.



Legenda:

-  Obszar Programu "Zanocuj w lesie"
-  Miejsce postojowe
-  Siedziba Leśnictwa
-  Droga publiczna
-  Droga leśna
-  Granica Leśnictwa

0 500 1 000 m




KOMPLEKS BALCZEWO


Podlesie

Rejna

Balczewo

Legenda:

 Obszar Programu "Zanocuj w lesie"

 Miejsce postojowe

 Siedziba Leśnictwa

 Droga publiczna

 Droga leśna

 Granica Leśnictwa

0 500 1 000 m

